

# SCHINDLER 9500®

**Type 55**

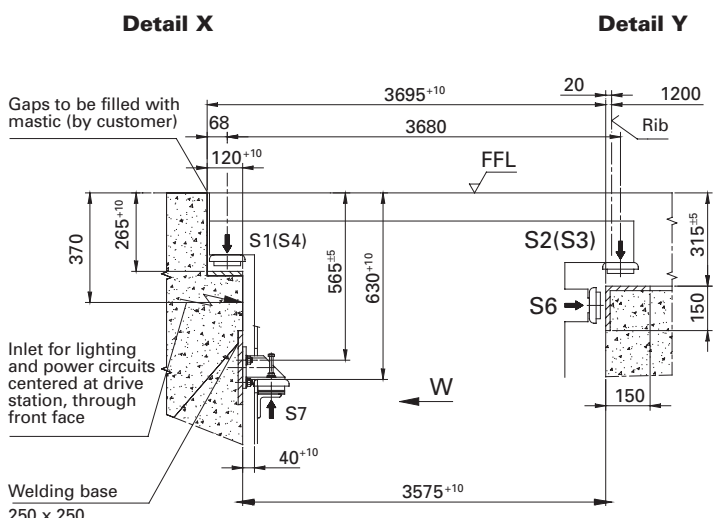
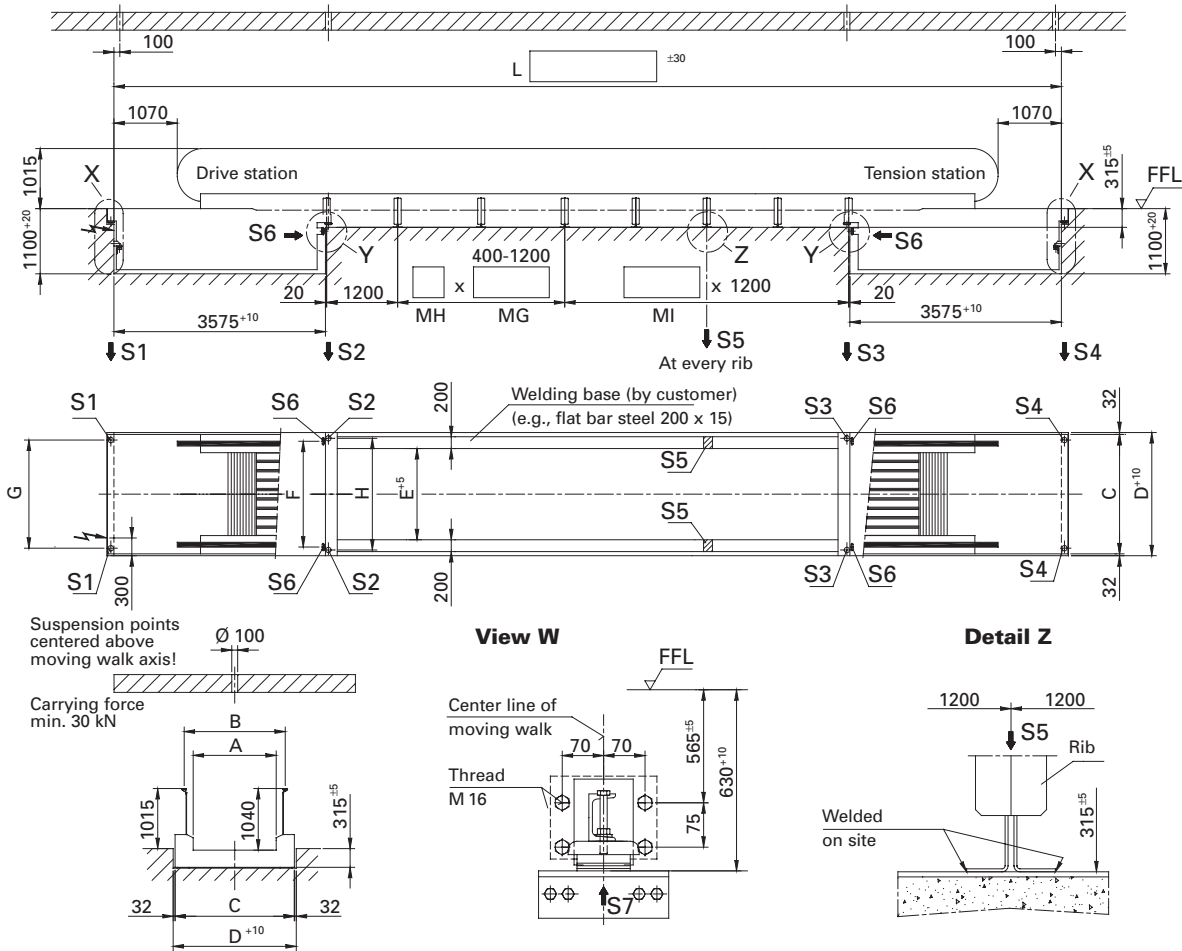
**Transportation length:** max. 100 m  
at an inclination of 0°  
design P

**Balustrade:**  
1000 mm

**Truss in drive and tension stations**

**Inclination:** 0°–6°

**Rubber belt width:** 1000/1200/1400 mm



**Max. support loads (kN)**

Belt width	1000	1200	1400
S1	9.0	10.0	11.0
S2	14.0	15.0	16.0
S3	14.0	15.0	16.0
S4	9.0	10.0	11.0
S5	5.0	5.5	6.0
S6	36.0	36.0	36.0
S7	10.0	10.0	10.0

**Motor rating table<sup>1)</sup>:**  
values for horizontal installation

v (m/s)	0.65		
A (mm)	1000	1200	1400
Rating	Maximum length (m)		
8 kW	53	47	43
11 kW	84	75	68

1) Motor ratings for other speeds on request.

All dimensions in mm.  
All loads in kN.  
Subject to changes.

**Schindler**

