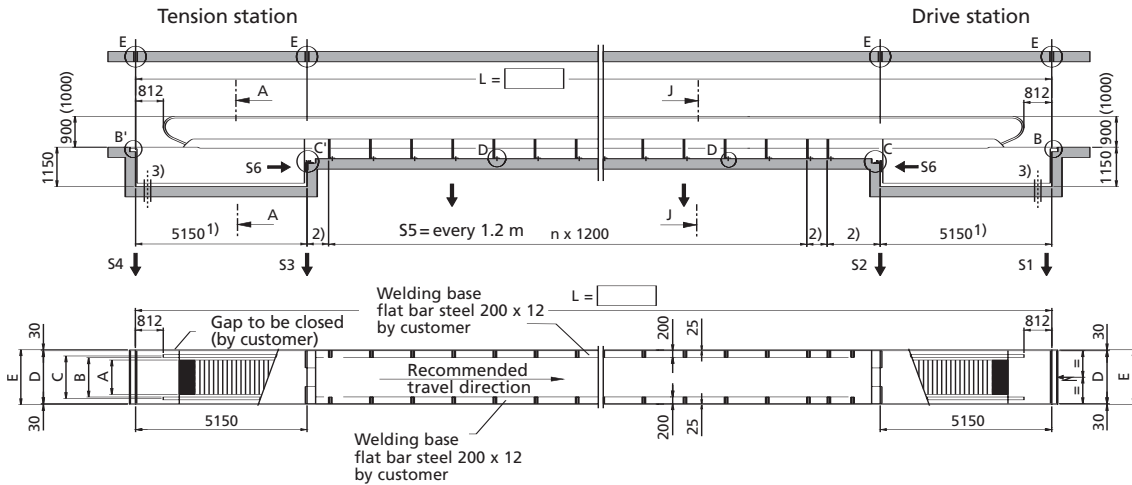


Schindler 9500

Type 35

Transportation length: max. 100 m
at an inclination of 0°
Balustrade: design E/F
Balustrade height: 900/1000 mm

Truss in drive and tension stations
Inclination: 0°–6°
Pallet width: 800/1000 mm

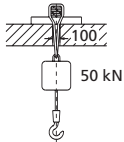


- 1) Standard length: 5150 mm
Range: min. 4705 mm – max. 7000 mm
- 2) Depending on project.
- 3) For outdoor installations a water drain shall be provided over the entire length of the concrete pit (by customer).
- 4) The support loads S1 and S4 are equally distributed over the width of the moving walk, whereas the support loads S2, S3, S5 and S6 are equally distributed among the supports on the left and right side.

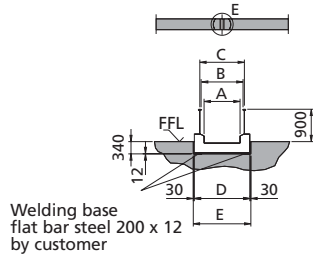
All dimensions in mm.
All loads in kN.
Observe national regulations!
Subject to changes.
Please consult Schindler.

Detail E

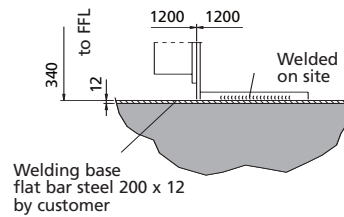
Suspension points centered above moving walk axis!
Carrying force min. 50 kN



Section J

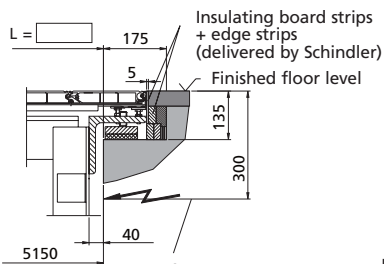


Detail D

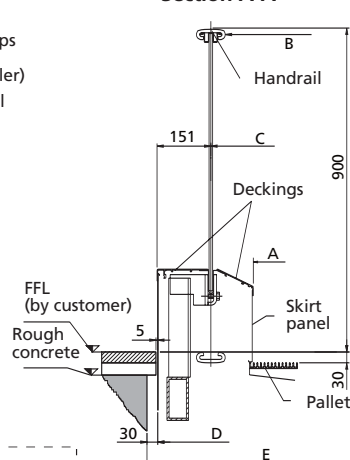


Detail B

(Detail B', mirror-inverted)

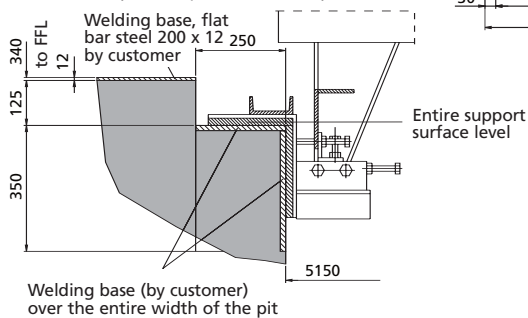


Section A-A



Detail C

(Detail C', mirror-inverted)



Max. support loads⁴⁾

Pallet width (mm)	800	1000
S1	28	32
S2	28	33
S3	27	31
S4	22	26
S5	7.5	9
S6	29	35

Pallet width	800	1000
A: Pallet width	800	1000
B: Width between handrails	958	1158
C: Handrail center distance	1038	1238
D: Moving walk width	1340	1540
E: Width of pit	1400	1600

Motor rating table:

values for horizontal installation

v (m/s)	0.5		0.65	
A (mm)	800	1000	800	1000
Rating (kW)	Maximum length (m)			
1 x 5.5	66	56	50	42
1 x 7.5	92	78	70	59
1 x 11	100	92	100	88
1 x 15	–	100	–	100



Schindler